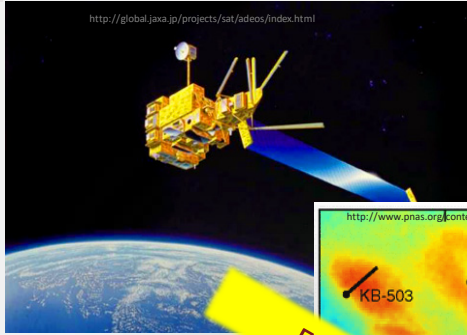
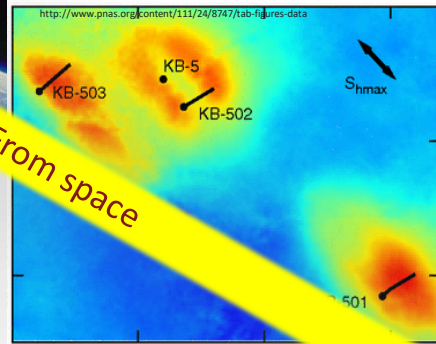


# Overview of SENSE project



Satellite monitoring for onshore sites



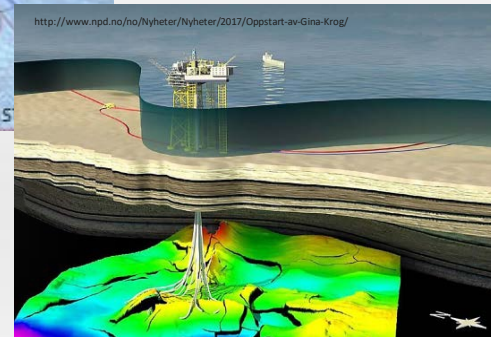
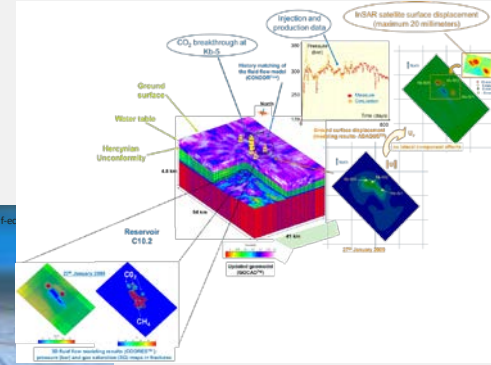
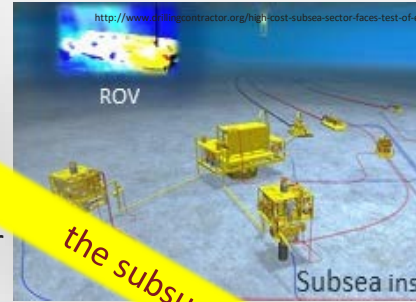
Demonstration of concepts and methods: onshore surface heave

From space

to

the subsurface

Application to offshore: Seabed monitoring; seafloor geodesy, ROV/AUV, tiltmeter, hydrostatic pressure.



Rock strain and geomechanical modelling, inversion- history matching → subsurface management & containment assurance



# Acknowledgement



SENSE (Assuring integrity of CO<sub>2</sub> storage sites through ground surface monitoring) project No. 299664, has been subsidized through ACT (EC Project no. 691712) by Gassnova, Norway, United Kingdom Department for Business, Energy and Industrial Strategy, Forschungszentrum Jülich GmbH, Projektträger Jülich, Germany, The French Agency for the Environment and Energy Management, The United States Department of Energy, Ministry of Economy, Industry and Competitiveness-State Research Agency, Spain, with additional support from Equinor, Quad Geometrics and Geogreen.

